

Sunday

Monday

Tuesday

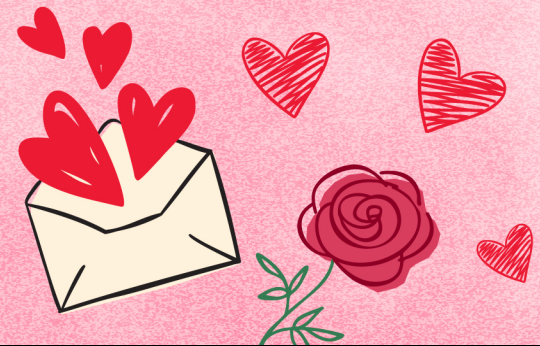
Wednesday

Thursday

Friday

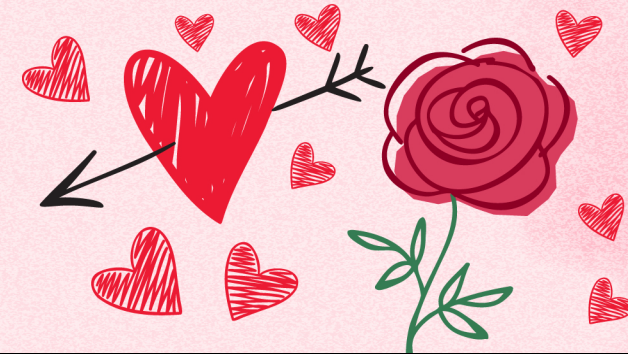
Saturday

\*\*\*All programs subject to change - please see posted Daily Schedule in TV Lounge for any updates.



# February 2025

## The Glenn Minnetonka: Fireside Suites



|  |   |   |   |   |  |  |
|--|---|---|---|---|--|--|
| <p>9:30 Sunday Stretches with Shelley<br/>10:00 Holiday History: Groundhogs Day with Shelley<br/>11:00 Catholic Mass with RA's - TV Channel 74<br/>2:00 Spiritual Sunday with RA's: The Wait (Netflix)<br/>3:45 Baking Group: Valentines Cupcakes with Shelley<br/>5:45 Animal Night with RA's: Prairie Dog Manor (Disney+)</p> <p style="text-align: right;"><b>2</b></p> <p style="text-align: center;">Groundhog Day</p>  | <p>9:30 Seated Exercises with RA's (YouTube)<br/>10:30 Daily Chronicles with Alissa<br/>11:00 Music Therapy with Addie<br/>1:30 Musical Performance with The Monday Jammers - Chapel with RA's &amp; TV Channel 14<br/>3:15 Bingo with Volunteer Judi - Lafayette Dining Room with RA's<br/>5:45 Piano Music with Volunteer Lilly</p> <p style="text-align: right;"><b>3</b></p>  | <p>9:30 Live 2B Healthy Exercise Class<br/>10:00 Manicures with Alissa<br/>11:15 Conversation Catch with Amelia<br/>2:00 Taste Test: Smoothies with Shelley<br/>3:00 Church Service with Pastor John Nelson from Gethsemane Lutheran Church - Chapel with Shelley and TV Channel 14<br/>4:00 Card Game: Go Fish with Shelley<br/>5:45 Ted Talk: Richard J Davidson with Amelia</p> <p style="text-align: right;"><b>4</b></p>   | <p>9:30 Sit &amp; Be Fit with Amelia<br/>10:00 Craft Project: Homemade Sugar Scrubs with Amelia<br/>11:15 Card Game: Uno with Amelia<br/>3:00 Fresh Popped Popcorn Delivered by Amelia &amp; Shelley<br/>3:30 Bingo with Volunteers Becca &amp; Reid - Lafayette Dining Room with Shelley<br/>4:15 Room Rounds with Shelley<br/>5:45 Conversation Cards with Shelley</p> <p style="text-align: right;"><b>5</b></p>   | <p>9:30 Chair Exercises with Shelley<br/>10:00 Quote of the Week with Shelley<br/>10:30 Daily Chronicles with Shelley<br/>11:00 Fingerpainting with Shelley<br/>2:30 MPLS Commodores Quartet Presents: Cinematix, A Musical Performance - Chapel with Amelia &amp; TV Channel 14<br/>4:15 Book Reading: My Great Aunt Arizona with Amelia<br/>5:45 Lotion Hand Massages with Amelia</p> <p style="text-align: right;"><b>6</b></p>                        | <p>9:30 Seated Exercises with Shelley<br/>10:00 Donuts with Shelley<br/>10:30 Visits with Volunteer Joellyn &amp; Dog Charlie<br/>11:00 The Little Red Valentine Story with Shelley<br/>2:30 Musical Entertainment by Colleen Wold-Hiebeler<br/>3:30 Dice Game: Yahtzee with Alissa<br/>5:45 Food Show Friday with RA's: Bake Squad (Netflix)</p> <p style="text-align: right;"><b>7</b></p>   | <p>9:30 Saturday Stretches with Shelley<br/>10:00 Sing-Along with Volunteers Bob &amp; Jeanne<br/>11:15 A Love Letter to Remember: A Valentines Story with Shelley<br/>2:30 Bingo with Volunteer Judi - Lafayette Dining Room with RA's &amp; Shelley<br/>4:30 Catholic Mass with Father Bakatu - Chapel with Shelley, RA's, &amp; TV Channel 14 (Families are welcome &amp; encouraged to attend with loved ones)<br/>5:45 Game Show Night with RA's: Press Your Luck (Hulu)</p> <p style="text-align: right;"><b>1</b></p> |
| <p>9:30 Sunday Stretches with Amelia<br/>10:00 Shopping Bingo with Amelia<br/>11:00 Catholic Mass with RA's - TV Channel 74<br/>2:00 Spiritual Sunday with RA's: Our Lady of San Juan: Four Centuries of Miracles (Netflix)<br/>3:45 Random Acts of Kindness Week: Making Flowers with Amelia<br/>5:45 Animal Night with RA's: Billy &amp; Molly: An Otter Love Story (Disney+)</p> <p style="text-align: right;"><b>9</b></p>   | <p>9:30 Seated Exercises with Shelley<br/>10:00 Daily Chronicles with Shelley<br/>10:00 Confessions with Father Berger - Pastoral Care Office (Families are encouraged to assist loved ones if interested)<br/>10:30 Valentines Stories with Shelley<br/>11:00 Music Therapy with Addie<br/>11:30 Prayer Group with Deacon Michael<br/>1:30 Musical Performance with The Monday Jammers - Chapel with RA's &amp; TV Channel 14<br/>1:30 Outing: Feed My Starving Children Service Project: Senior Day! with Alissa &amp; Shelley<br/>3:15 Bingo with Volunteer Judi - Lafayette Dining Room with RA's<br/>5:45 Piano Music with Volunteer Lilly</p> <p style="text-align: right;"><b>10</b></p> | <p>9:30 Live 2B Healthy Exercise Class<br/>10:00 Manicures with Alissa<br/>11:15 Chuck-a-Duck Game with Amelia<br/>2:00 Church Service with Deacon Michael - Chapel with Shelley &amp; TV Channel 14<br/>3:15 Taste Test: Berries with Fruit Dip with Shelley<br/>6:15 Piano Music by Evan Kaseth - Chapel with Community Life &amp; TV Channel 14</p> <p style="text-align: right;"><b>11</b></p>  | <p>9:30 Sit &amp; Be Fit with Amelia<br/>10:00 Craft Project: Valentine's Cards with Amelia<br/>11:15 Holiday History: Tu B'Shevat with Amelia<br/>2:30 Heart Health Presentation with Annette Parker from Interim - Chapel &amp; TV Channel 14<br/>3:00 Fresh Popped Popcorn Delivered by Amelia &amp; Shelley<br/>3:30 Bingo with Volunteers Becca &amp; Reid - Lafayette Dining Room with Shelley<br/>4:15 Room Rounds with Shelley<br/>5:45 National Geographic with Shelley<br/>Tu B'Shevat Begins</p> <p style="text-align: right;"><b>12</b></p> | <p>9:30 Chair Exercises with Shelley<br/>10:00 Quote of the Week with Shelley<br/>10:30 Daily Chronicles with Shelley<br/>11:00 Grandma's Valentine Tradition: A Valentine Story with Shelley<br/>2:30 Celebrating Monthly Birthdays with Musical Entertainment by Bob Scoggin - Chapel with Amelia &amp; TV Channel 14<br/>4:15 Table Top Bowling with Amelia<br/>5:45 Ted Talk: Leila Allen with Amelia</p> <p style="text-align: right;"><b>13</b></p> | <p>9:30 Seated Exercises with Amelia<br/>10:00 Donuts with Amelia<br/>11:15 Love Songs Sing-Along with Amelia<br/>1:30 Stations of the Cross with Deacon Michael - Chapel &amp; TV Channel 14<br/>(Families are encouraged to assist loved ones if interested)<br/>2:30 Holiday History: Valentine's Day with Amelia<br/>2:30 New Resident Meet &amp; Greet Social - Hosted by our Marketing Team: Maddie &amp; Kasey - Lafayette Dining Room (Families are encouraged to assist loved ones if interested)<br/>5:45 Food Show Friday with RA's: The Big Family Cooking Showdown (Netflix)</p> <p style="text-align: center;">Valentine's Day</p> <p style="text-align: right;"><b>14</b></p> | <p>9:30 Saturday Stretches with Shelley<br/>10:00 Sing-Along for Seniors (YouTube)<br/>11:15 Daily Chronicles with Shelley<br/>2:30 Bingo with Volunteer Judi - Lafayette Dining Room with RA's &amp; Shelley<br/>4:30 Catholic Mass with Father Backmann - Chapel with Shelley, RA's, &amp; TV Channel 14 (Families are welcome &amp; encouraged to attend with loved ones)<br/>5:45 Game Show Night with RA's: \$100,000 Pyramid (Hulu)</p> <p style="text-align: right;"><b>15</b></p>                                    |
| <p>9:30 Sunday Stretches with Shelley<br/>10:00 Holiday History: Groundhogs Day with Shelley<br/>11:00 Catholic Mass with RA's - TV Channel 74<br/>1:15 - 3:15 Galentine's Jewelry Party &amp; Refreshments with Alissa, Shelley, &amp; Special Guest Jackie - Perk<br/>(Families encouraged to attend with loved ones)<br/>2:00 Spiritual Sunday with RA's: Mary (Netflix)<br/>3:45 Daily Chronicles with Shelley<br/>5:45 Animal Night with RA's: Howie Mandel's: Secrets of the Elephants (Disney+)</p> <p style="text-align: right;"><b>16</b></p> | <p>9:30 Seated Exercises with Amelia<br/>10:00 Daily Chronicles &amp; Holiday History: Presidents Day with Amelia<br/>10:30 Card Game: Uno<br/>11:00 Music Therapy with Addie<br/>11:30 Prayer Group with Deacon Michael<br/>1:30 Musical Performance with The Monday Jammers - Chapel with Alissa &amp; TV Channel 14<br/>3:15 Bingo with Volunteer Judi - Lafayette Dining Room with Alissa &amp; Amelia<br/>5:45 Piano Music with Volunteer Lilly</p> <p style="text-align: center;">Presidents' Day (U.S.)</p> <p style="text-align: right;"><b>17</b></p>  | <p>9:30 Live 2B Healthy Exercise Class<br/>10:00 Manicures with Alissa<br/>11:15 Happy Birthday Vanna White with Amelia<br/>2:00 Church Service with Deacon Michael - Chapel with Shelley &amp; TV Channel 14<br/>3:15 Taste Test: Pesto vs. Alfredo with Shelley<br/>4:00 Card Game: Crazy 8's with Shelley<br/>5:45 Lotion Hand Massages with Amelia</p> <p style="text-align: right;"><b>18</b></p>  | <p>9:30 Sit &amp; Be Fit with Amelia<br/>10:00 Craft Project: Watercolor Painting with Amelia<br/>11:15 Fill in the Blank Game with Amelia<br/>3:00 Fresh Popped Popcorn Delivered by Amelia &amp; Shelley<br/>3:30 Bingo with Volunteers Becca &amp; Reid - Lafayette Dining Room with Shelley<br/>4:15 Room Rounds<br/>5:45 Name 10 Trivia with Shelley</p> <p style="text-align: right;"><b>19</b></p>   | <p>9:30 Chair Exercises with Shelley<br/>10:00 Quote of the Week with Shelley<br/>10:30 Daily Chronicles with Shelley<br/>11:00 Magnetism with Shelley<br/>3:00 Active Game: Flyswatter Balloon Batting with Amelia &amp; Shelley<br/>4:15 Puzzles with Amelia<br/>5:45 Travel to the Strangest Country on Earth with Amelia</p> <p style="text-align: right;"><b>20</b></p>  | <p>9:30 Seated Exercises with Shelley<br/>10:00 Donuts with Shelley<br/>10:30 Piano Music with James Shaw<br/>11:15 Resident Meeting - Chapel &amp; TV Channel 14 (Families are encouraged to assist loved ones if interested)<br/>11:30 Card Game: Crazy 8's with Shelley<br/>1:30 Stations of the Cross with Deacon Michael - Chapel &amp; TV Channel 14 (Families encouraged to assist loved ones if interested)<br/>2:45 Puzzle Time with Shelley<br/>5:45 Food Show Friday with RA's: A Tale of Two Kitchens (Netflix)</p> <p style="text-align: right;"><b>21</b></p>  | <p>9:30 Saturday Stretches with Amelia<br/>10:00 Sing-Along for Seniors (YouTube)<br/>11:15 Table Top Tennis with Amelia<br/>2:30 Bingo with Volunteer Judi - Lafayette Dining Room with RA's &amp; Amelia<br/>4:30 Catholic Mass with Father Bakatu - Chapel with Amelia, RA's, &amp; TV Channel 14 (Families are welcome &amp; encouraged to attend with loved ones)<br/>5:45 Game Show Night with RA's: Celebrity Jeopardy (Hulu)</p> <p style="text-align: right;"><b>22</b></p>   |
| <p>9:30 Sunday Stretches with Amelia<br/>10:00 Making Coasters with Amelia<br/>11:00 Catholic Mass with RA's - TV Channel 74<br/>2:00 Spiritual Sunday with RA's: The Story of Moses (Netflix)<br/>3:45 Animal Jeopardy with Amelia<br/>5:45 Animal Night with RA's: Kingdom of the White Wolf (Disney+)</p> <p style="text-align: right;"><b>23</b></p>   | <p>9:30 Seated Exercises with Shelley<br/>10:00 Daily Chronicles with Shelley<br/>10:30 Trivia Time with Shelley<br/>11:00 Music Therapy with Addie<br/>11:30 Prayer Group with Deacon Michael<br/>1:30 Musical Performance with The Monday Jammers - Chapel with Alissa &amp; TV Channel 14<br/>3:15 Bingo with Volunteer Judi - Lafayette Dining Room with Alissa &amp; Shelley<br/>5:45 Piano Music with Volunteer Lilly</p> <p style="text-align: right;"><b>24</b></p>   | <p>9:30 Live 2B Healthy Exercise Class<br/>10:00 Manicures with Alissa<br/>11:15 Reminiscing: Music &amp; Movies with Amelia<br/>2:00 Church Service with Pastor Dan Schultz from Zion Lutheran Church - Chapel with Shelley &amp; TV Channel 14<br/>3:15 Taste Test: Chocolate Covered Nuts with Shelley<br/>4:00 Card Game: Uno with Shelley<br/>5:45 Ted Talk: Mandy Saligari - Feelings: Handle Them Before They Handle You with Amelia</p> <p style="text-align: right;"><b>25</b></p> | <p>9:30 Sit &amp; Be Fit with Amelia<br/>10:00 Craft Project: Georgia O'Keefe Oil Pastel Art with Amelia<br/>11:15 Chit Chats with Amelia<br/>3:00 Fresh Popped Popcorn Delivered by Amelia &amp; Shelley<br/>3:30 Bingo with Volunteers Becca &amp; Reid - Lafayette Dining Room with Shelley<br/>4:15 Room Rounds with Shelley<br/>5:45 Would You Rather Game with Shelley</p> <p style="text-align: right;"><b>26</b></p>  | <p>9:30 Chair Exercises with Shelley<br/>10:00 Quote of the Week with Shelley<br/>10:30 Daily Chronicles with Shelley<br/>11:00 Puzzle Time with Shelley<br/>2:00 Superfood of the Month: Dark Chocolate with Heidi from Unidine<br/>3:00 Active Game: Parachute Balloon Toss with Amelia &amp; Shelley<br/>4:15 Domino Trains with Amelia<br/>5:45 Animal Matching Game with Amelia</p> <p style="text-align: right;"><b>27</b></p>                      | <p>9:30 Seated Exercises with Amelia<br/>10:00 Donuts with Amelia<br/>10:30 Daily Chronicles with Amelia<br/>11:00 Holiday History: Ramadan with Amelia<br/>1:30 Stations of the Cross with Deacon Michael - Chapel &amp; TV Channel 14 (Families are encouraged to assist loved ones if interested)<br/>2:00 Dice Game: Farkle with Alissa<br/>3:00 Flute Music with Alissa<br/>5:45 Food Show Friday with RA's: Baking Impossible (Netflix)</p> <p style="text-align: center;">Ramadan Begins</p> <p style="text-align: right;"><b>28</b></p>  | <p style="text-align: center;"><b>Alissa Dvorak</b><br/>Community Life &amp; Volunteer Director<br/>ADvorak@GreatLakesMC.com<br/>952-345-4422</p> <p style="text-align: center;"><b>Amelia Heath</b><br/>Community Life Coordinator<br/>AHeath@GreatLakesMC.com<br/>952-345-4414</p> <p style="text-align: center;"><b>Shelley Bergman</b><br/>Community Life Coordinator<br/>SBergman@GreatLakesMC.com<br/>952-345-4410</p>   |